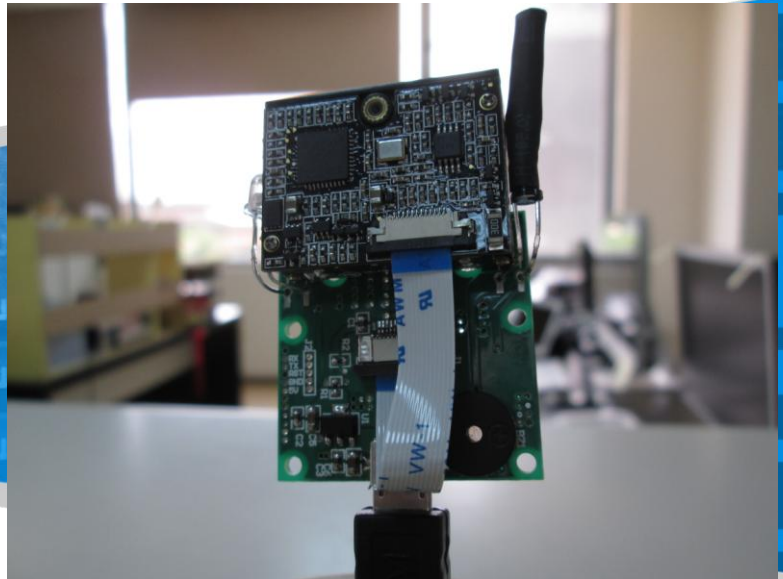


## KP-8010

### OEM Scan Module



The KP-8010 OEM scan module, armed with linear imager, is suitable to be integrated into various OEM devices including kiosks, ticket validators and PDAs.

The KP-8010 is comprising optical system, digitizer, decoder, image processor and embedded system. The device demonstrates an unprecedented decoding capability on all mainstream 1D symbologies.

The KP-8010 supports EAN-13, EAN-8, UPC-A, UPC-E, ISSN, ISBN, Codabar, Code 128, Code 93, ITF-6, ITF-14, Interleaved 2 of 5, Industrial 2 of 5, Standard 2 of 5, Matrix 2 of 5, GS1 Databar, Code 39, Code 11, MSI-Plessey, Plessey.

#### Features:

- **Two-In-One Design:** Seamless integration of imager and decoder board makes the scan engine small, lightweight and easy for integration.
- **Superior performance:** The KP-8010 delivers fast and accurate reading of 1D barcodes.
- **Low power consumption:** The scan module provides an optimal solution for battery-operated equipments and mobile devices.
- **Easy to use:** Simple parameter configuration.

## KP-8010 Specifications

Performance		
Interface	TTL-232(Tx/Rx/Reset/Vcc/Gnd), Micro USB1.1	
Image Sensor	Linear Imager	
Resolution	1500	
Scan Rate	300 scans per second	
Symbologies	EAN-13, EAN-8, UPC-A, UPC-E, ISSN, ISBN, Codabar, Code 128, Code 93, ITF-6, ITF-14, Interleaved 2 of 5, Industrial 2 of 5, Standard 2 of 5, Matrix 2 of 5, GS1 Databar, Code 39, Code 11, MSI-Plessey, Plessey.	
Reading Precision	≥ 4mil	
Light Source	LED (610nm ~ 640nm)	
Depth of Field	Code 39 (5mil): 65mm~175mm EAN-13 (13mil): 55mm ~ 605mm	
Scan Angle	Pitch	±60° @ 0° Roll and 0° Skew
	Roll	±30° @ 0° Pitch and 0° Skew
	Skew	±60° @ 0° Roll and 0° Pitch
Symbol Contrast	≥ 30% reflectance difference	
Indicator	Two LED (red & blue)	
Button	1 Button : Scan	
Option	IR Detect(940nm)	
Mechanical/Electrical		
Rated Power Consumption	0.20W	
Operating Voltage	3.0 ~ 3.6VDC	
Current @ 3.3VDC	Operating Current	60mA
	Standby Current	25mA
Dimensions	32(W)×32(D)×12.75(H)mm	
Weight	8.0g	
Environmental		
Operating Temperature	-20°C ~ +60°C	
Storage Temperature	-40°C ~ +85°C	
Humidity	5% ~ 95% (non-condensing)	
Ambient Light	0 ~ 100,000 LUX	
Scan Engine Certifications		
FCC Part15 Class B; CE EMC Class B		

## Contact Us

### KUTECH INFORMATION

Co.,Ltd.

+886-7-330-6268

sales@kutech.com.tw

\*Specifications are subject to change without notice.\*

1.0.0

\*规格如有更改,恕不另行通知。\*

V1.0.0

The logo for Kutech, featuring the word "kutech" in a bold, lowercase, red sans-serif font.